

牛仔裤表袋装袋机
MB1102J-IM

Coin pocket setter (pattern sewer)

机器型号
Machine Model

MB1102J-IM

机头配置
Sewing head

IMB

最快缝纫速度/rpm
Maximum sewing speed

2600

工作电压/V
Working voltage

220

工作气压/Mpa
Working air pressure

0.5

主轴、X/Y 控制
Main axis, X/Y control

机头伺服电机
Sewing head servo motor
闭环步进电机
Closed stepping motor

缝制针距长度/mm
Stitch length

0.05-12.7

工作效率
Work efficiency

6s/pcs

换模方式
Mould change way

无快速换模
No quick change

设备尺寸(L*W*H)/mm
Dimension

1500x1165x1400

设备重量/kg
Weight

150

表袋缝制范围(长x宽)
Sewing range

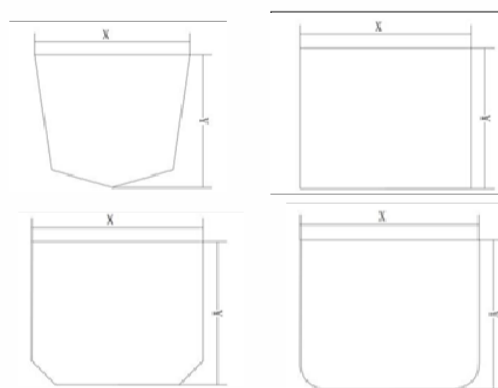
60x60-130x130

袋形尺寸/mm
Pocket size

60x60-130x130

- 1 搭载IMB定制花样机机头，缝制性能稳定；
- 2 适用小表带、童装童裤等场合，结构紧凑；
- 3 采用HMI触摸式操作屏，操作简单，功能齐全。

- 1 Customized IMB pattern sewing head, stable performance.
- 2 Small coin pocket, children clothes, compact structure.
- 3 HMI touch panel, easy operation performance.



常州智谷机电科技有限公司
IMB AUTOMATION CO.,LTD.

江苏省常州市天宁区华云路33号
NO.33 Huayun Road, Tianning district
changzhou,jiangsu Province

0519-88856388

sale@imb-china.com

www.imb-china.com

